
TAKE CONTROL

OF HEALTH CLAIMS MANAGEMENT



BEACON

TECHNOLOGIES GROUP, INC.


BEACONSPYGLASS.COM



OVER 25 YEARS OF INNOVATION

At Beacon, we are a trusted leader in providing health claims management technology solutions for healthcare payers. Our comprehensive SpyGlass suite empowers our clients to process claims swiftly and accurately, automate key operations, and effectively administer a wide range of plans to stay ahead of competitive market demands.

Our innovative software products, industry acumen, and technology expertise combined with tailored professional services allow us to help healthcare payers improve productivity, efficiency, and profitability. Designed from a clean slate with modern technology, our suite of applications empowers TPAs, health plans, self-administered fund offices, and ancillary payers by listening to their needs, defining strategies to achieve their objectives, and delivering accountable, comprehensive solutions that fit their culture, budget, and timeline.



BENEFITS

TO OUR CUSTOMERS

PARTNERSHIPS & INTEGRATIONS

Beacon aligns itself with the best possible partners to complement its health claims processing technology solution. Together, with our partners, Beacon can help you design and implement a total solution to fit your customers' needs.

AUTOMATION

SpyGlass can help improve performance and increase administrative efficiency through a variety of ways, including dramatic processing and auto-adjudication rates, quicker claims and eligibility import/export, dynamic correspondence, and flexible real-time reporting tools.

CLIENT SUCCESS

At Beacon, we're passionate about listening to your needs, defining strategies to achieve your objectives, and delivering accountable, comprehensive solutions that fit your culture and timeline.

TAILORED PROFESSIONAL SERVICES

From real-time integrations to system upgrades, our professional services ensure smooth operations today and a path toward your future business needs.

SECURITY

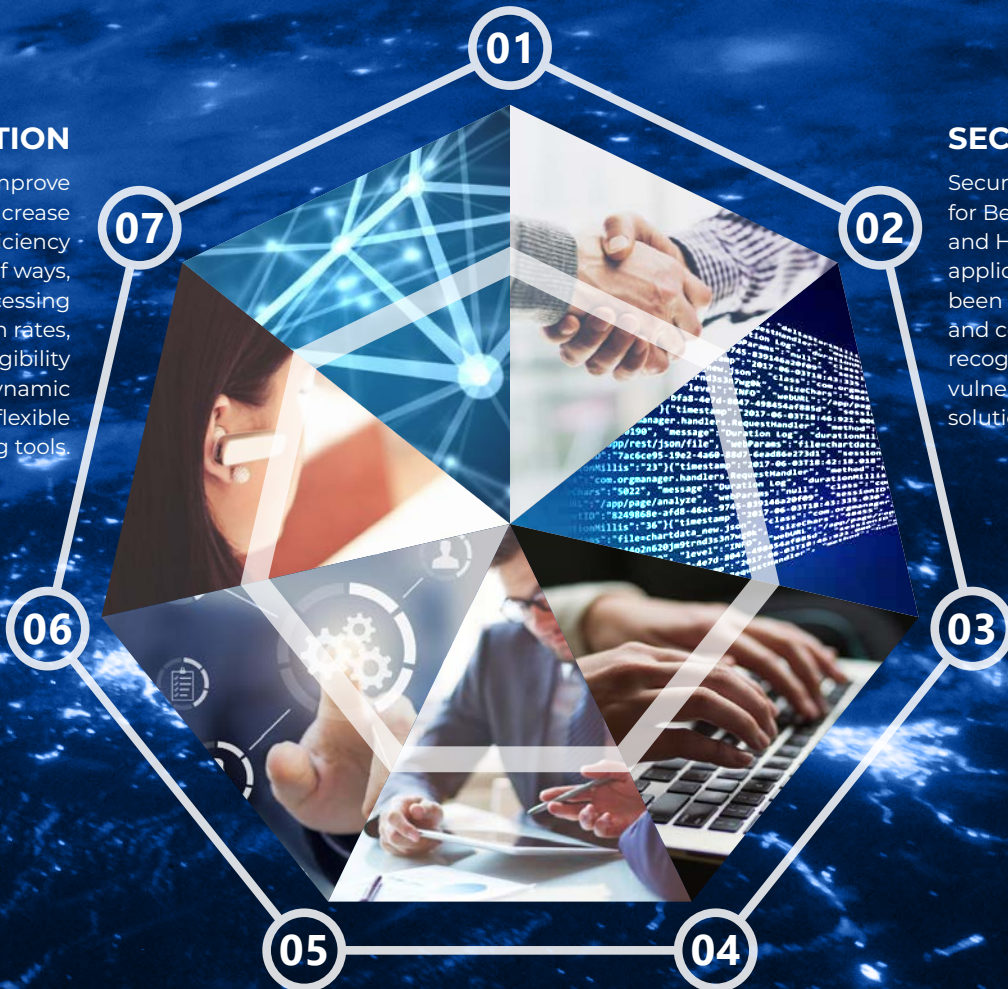
Security is a top priority for Beacon. SpyGlass and HIPAA Director web application security have been comprehensively tested and certified by industry recognized, third-party vulnerability management solution providers.

REMARKABLE EASE OF USE

Vastly reduce training time, cost, and burden with SpyGlass. Our system brings real ease of use to claims processing operations by covering medical, dental, vision, short and long-term disability, COBRA, and life claims.

COMPONENT-BASED ARCHITECTURE

As new rules, regulations, and security requirements come into effect, the SpyGlass architecture allows us to easily customize the system to support new technologies and methodologies.



SPYGLASS

FULLY-INTEGRATED CLAIMS ADMINISTRATION

Our leading-edge, fully cloud-based health claims processing software offers a powerful, flexible solution for accurate and timely claims processing. SpyGlass makes benefit and plan setup remarkably straightforward and handles full medical, dental, vision, short and long-term disability, time-loss payments, COBRA, and life claims. Our configurable rules- and roles-based framework allows business users to easily manage plan setup for increased security and improved workflow systems. SpyGlass integrates with

advanced tools, like Microsoft Word and Excel, to deliver the flexibility and functionality necessary to increase efficiency and improve performance.

Whether a TPA, health plan, labor fund, self-funded group, ACO, international, or government offering, SpyGlass provides dramatically improved solutions to the health claim management process. Take back control of the ability to manage your operation, and gain the power to get the information you want, when you want it.



Remarkable Ease of Use

Vastly reduce training time, cost, and burden.



Cloud-Based Technology

Access the application from any location, on any device.



Intelligent Dashboards

Real-time data and metrics, including KPIs and an accumulative snapshot of population health.



Real-Time Reporting

Powerful and flexible reporting tools with one-click exporting.



Searchable Online Help

Knowledgebase of system resources and reference material.

CLAIMS PROCESSING, SIMPLIFIED

Dramatic Automation

Reduced administrative costs, increased accuracy on claim processing, and decreased manual reviews.

Advanced Tools

Easy integration with Word/Excel/PDF/XML, acknowledgment time stamps, and automated correspondence with follow ups.



Group Innovation

Support for stop-loss, self-funding, level-funding, and integrated HRA with employer cost-sharing.

Customer Service

Comprehensive information for customer service and call management by way of strong search and view capabilities.

AUTOMATED BILLING

SpyGlass eliminates manual data entry and transforms your client billing into intuitive, fully-automated processes, ensuring that administrative duties are done quickly, accurately, and on time. Billing contracts include configurable billing and remittance methodologies that can be assigned dynamically to groups and their divisions.

REAL-TIME APIs

Beacon has developed a wide range of real-time, comprehensive API and file import and export facilities to integrate with virtually any system that is available to your internal and authorized, secured external applications. Connect apps, portals, customer service applications, and online services via a single sign-on authenticated token.

2FA & BIOMETRIC AUTHENTICATION

For stringent requirements, SpyGlass supports two-factor and biometric authentication. These additional security layers help to protect against stolen passwords, phishing attempts, and brute-force attacks. Beacon's comprehensive security framework allows access only to users that are properly authorized and authenticated.

HIPAA

DIRECTOR

All-In-One EDI
Gateway & Scheduler

Beacon's all-in-one EDI gateway and scheduler works as a hub by allowing you to directly connect with vendor partners to help avoid transaction costs, manage batch transfers, and automate transfers. HIPAA Director provides controls to setup custom HIPAA mappings for your transactions that may vary among vendor partners and create transaction schedules to fit your needs. Empower your organization by increasing accuracy and reliability through dramatic automation with HIPAA Director.



HIPAA Director is included in the SpyGlass solution or as a stand-alone option to work with existing legacy systems.

FEATURES

- Setup and manage trading partners
- Advanced external routing capabilities for multiple repricing tiers
- Automate, test, and run batches on demand
- Email notification of transfers with attached summaries, reports, and files
- EFT to providers and PPO payments with secure, intelligent EOB options
- Support for multiple encryption standards
- Download, decrypt, encrypt, and transfer to an additional trading partner in a single transaction

AVOID TRANSACTION COSTS

**SPEED &
AUTOMATION**

**RELIABILITY &
ACCURACY**

MANAGE BATCH TRANSFERS

COMPASS

CODE EDITS



Compass Code Edits, Beacon's clinical code editing solution, evaluates medical coding compliance and validity with sensibility, consistency, and accuracy. Compass uses over 4.2 million federal-approved and industry-sourced edits. Based on edits published by the Center for Medicare and Medicaid Services and developed in conjunction with the American Medical Association and the American Hospital Association, providers recognize the validity of Compass Code Edits.

Our fast, accurate results provide measurable value in increased claim auto-adjudication rates and savings on affected claims. Enhance your health claims management process with Compass Code Edits by adding increased accuracy and appropriateness checks for claims before any payments are made and without disrupting your current adjudication workflow.



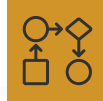
Increased Auto-Adjudication & Accuracy

Automated editing technology cross-referencing claims history and claims data combined with industry-sourced guidelines enables claims to process faster with increased accuracy.



Flexible, Low-Cost Implementation

Whether deployed alongside your other repricing or fraud/abuse vendors, Compass adds seamless clinical code editing to your current claims system with low implementation costs.



Streamlined Adjudication Process

Design and implement procedures within your smart workflow queues to automatically pend or deny claims flagged by Compass to the appropriate department for review.



Substantial Savings

Realize medical and administrative cost savings and increase end-to-end efficiency by preventing inaccurate claims and avoiding improper costs.

CODE EDIT VALIDATION CHECKS

- ✓ Ambulatory Surgical Center (ASC)
- ✓ Assistant Surgeon
- ✓ Co-Surgeon & Team Surgeon
- ✓ Global Surgery Edits (GSE)
- ✓ Practitioner Procedure-to-Procedure (PTP)
- ✓ Outpatient Hospital Procedure-to-Procedure (PTP)
- ✓ Practitioner Services Medically Unlikely Edits (MUEs)
- ✓ DME Supplier Medically Unlikely Edits (MUEs)
- ✓ Outpatient Hospital Medically Unlikely Edits (MUEs)
- ✓ Invalid Diagnosis Codes
- ✓ Invalid ICD-PCS Procedure Codes
- ✓ Invalid CPT Procedure Codes
- ✓ Terminated Diagnosis Codes
- ✓ Terminated ICD-PCS Procedure Codes
- ✓ Terminated CPT Procedure Codes
- ✓ Gender Specific Diagnosis Codes
- ✓ Gender Specific ICD-PCS Procedure Codes
- ✓ Gender Specific CPT Procedure Codes
- ✓ Age Specific Diagnosis Codes
- ✓ Age Specific CPT Procedure Codes
- ✓ Add-on Codes
- ✓ Bundled Procedures (Status B)
- ✓ Incidental Procedures (Status T)

See How SpyGlass Will Elevate Your Business

To schedule a live, personalized demo where Beacon will walk you through the ways SpyGlass will elevate your business, email us today at marketing@beaconspyglass.com. Modernize your health claims management with Beacon's comprehensive solution.

ABOUT BEACON

Beacon is a leading-edge software firm specializing in health claims processing solutions for healthcare payers. SpyGlass, our enterprise-class claims processing software, paired with HIPAA Director and Compass Code Edits, provides an easy-to-use, dynamic platform that maximizes automation, boosts business performance, and thoroughly connects you with your customers for enhanced engagement.

Beacon Technologies Group, Inc.

11550 N Meridian St, Suite 500
Carmel, IN 46032
T: 317.705.0500

